

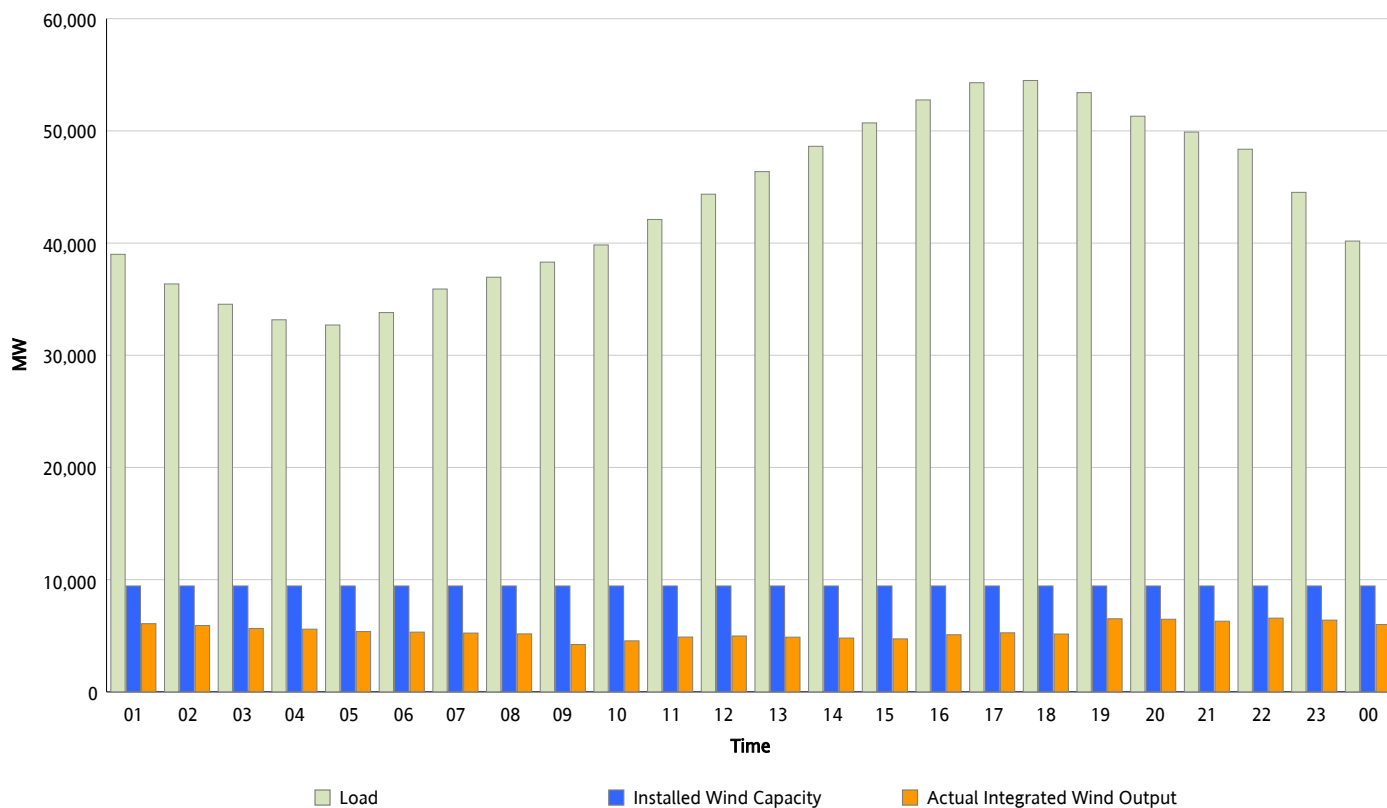


## ERCOT Grid Operations

### Wind Integration Report : 05/30/2012

|                      |           |
|----------------------|-----------|
| Peak Load            | 54,494 MW |
| Load Peak Hour (HE)  | 18        |
| Wind Over Peak       | 5,155 MW  |
| Wind Record 04/13/12 | 7,925 MW  |
| Max Wind Value*      | 6,887 MW  |
| Wind Peak Time       | 18:55     |
| Wind Integration %   | 13.03 %   |

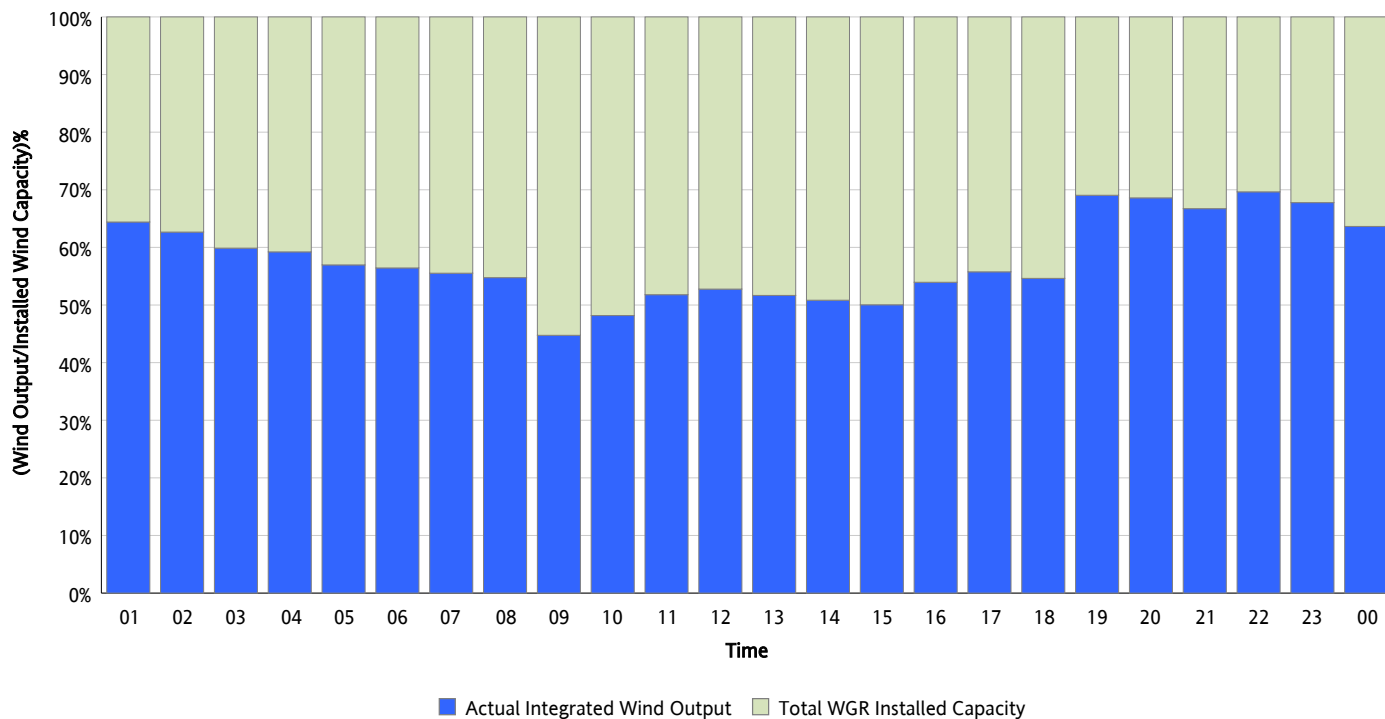
**Hourly Average Actual Load vs. Actual Wind Output**  
**05/30/2012**



\* Wind Record and Wind Max represent instantaneous values and the rest of the values are integrated over the hour

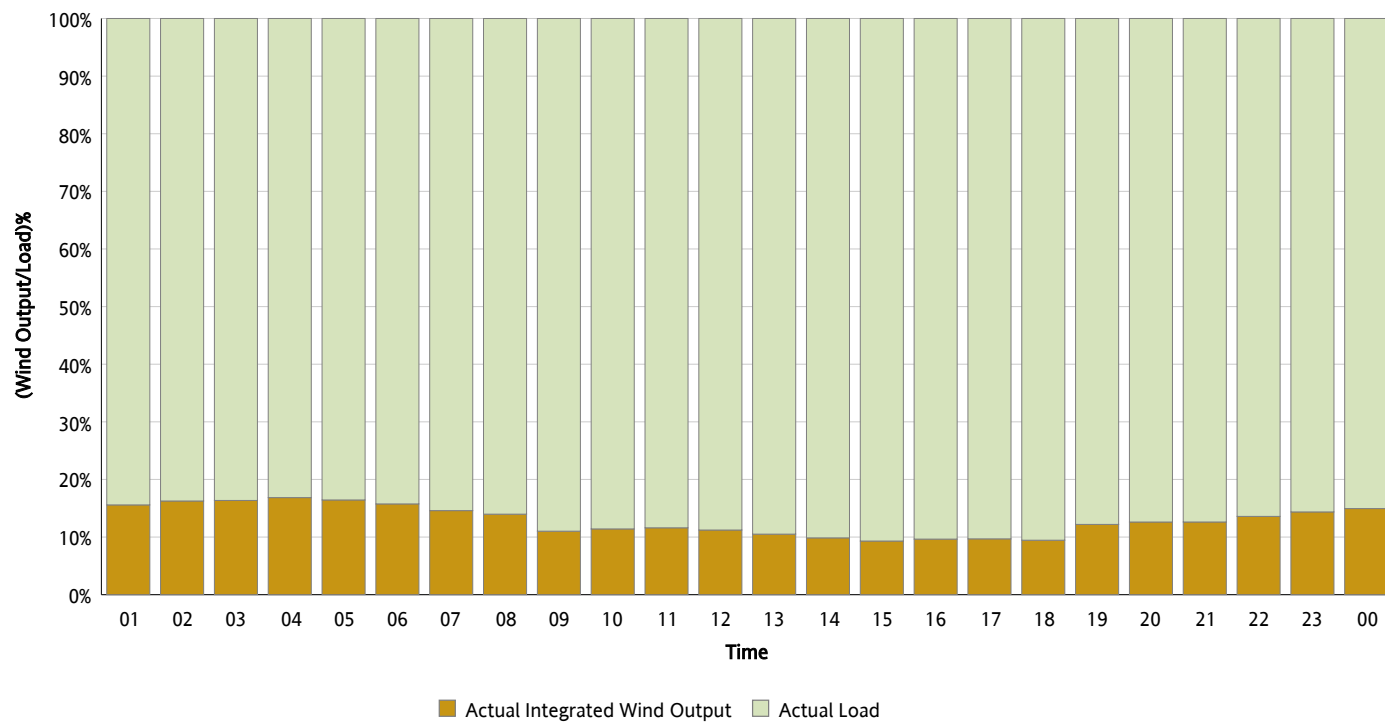
## Actual Wind Output as a Percentage of the Total Installed Wind Capacity

05/30/2012



## Actual Wind Output as a Percentage of the ERCOT Load

05/30/2012



## ERCOT Load vs. Actual Wind Output

05/23/2012 - 05/30/2012

